

TRUCKMATE

The Next Generation Portable Axle Weigher

Reduce the Risk of Overloading

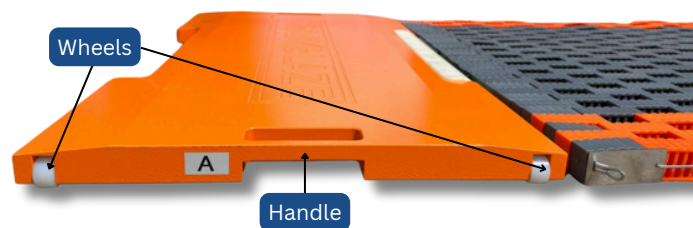


Introducing our hi-technology portable truck axle weigher **TRUCKMATE** the ultimate high accuracy weighing solution for trucks, trailers and other heavy-duty vehicles. Wired or wireless, accurate weight measurements have never been easier.

Designed with durability in mind, TRUCKMATE features two or more high-quality weighing pads capable of handling up to 40 tonne per axle. Constructed from heavy-duty steel, these pads provide a non-slip surface for precise weight readings in any operating environment.

One of the key features of the TRUCKMATE Axle Vehicle Weighing Scale is its wireless connectivity, which allows for easy data transfer and real-time weight monitoring.

The system includes a compact and lightweight controller with a clear LCD display and printer in a robust carry case providing users with accurate weight readings.



Key features:

- Slimline
- Load cell based with high static or weigh in-motion high accuracy
- Water-Resistant, corrosion-proof & shock-resistant
- Large weighing surfaces that can accommodate dual tyres
- Built-in cable protector to avoid error when cable is broken (wired version)
- Built-in anti-electromagnetic parts to ensure weighing results will not be influenced
- Built-in auto compensation system to compensate for weighing error on dual and tri-axle groups

Rolled up levelling mats

Note: Levelling mats may be required for varying vehicle configuration

TECHNICAL DATA

PAD INFORMATION FOR STATIC WEIGHING

Pad size (mm)	Ramp size	Approx. Capacity per pad
400 x 300 x 40	400 x 250	5 tonne
500 x 400 x 40	500 x 250	10 tonne
800 x 450 x 40	800 x 350	15 tonne
900 x 500 x 40	900 x 350	20 tonne

PAD INFORMATION FOR DYNAMIC WEIGHING

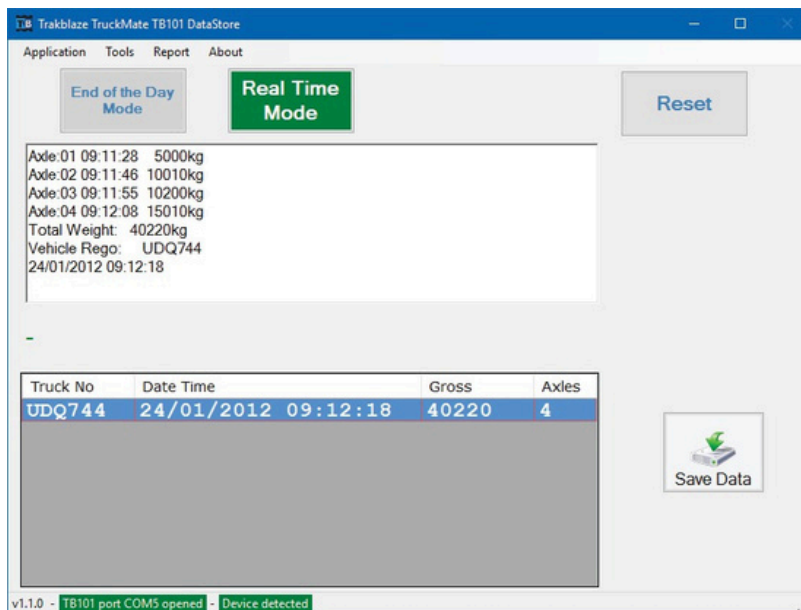
Pad size (mm)	Roll up mat size	Capacity per pad
400 x 300 x 40	3000 x 400	5 tonne
500 x 400 x 40	3000 x 500	10 tonne
800 x 450 x 40	3000 x 800	15 tonne
900 x 500 x 40	3000 x 900	20 tonne

Static Accuracy:	± 0.3%
In-Motion Accuracy:	± 2.0%
Temperature Compensation Range:	-10 ~ +50°C
Sensitivity:	1±0.2 MV/V
Repeatability:	≤0.01%FS
Working Temperature:	-40 ~ +80°C
Overload Protection:	Approx. 120%

Note: Subject to change without notice. Images are for illustration purposes only. Speeds and accuracies may vary based on site conditions and vehicle operation.



Storage case



TRUCKMATE software data display, storage & spreadsheets

WEIGHING REPORT	
Serial No:	100012
Date:	10-10-2023
Time:	11:42:26
Truck:	123
Operator:	
Driver:	
Total weight:	240kg
No.1 Axle Config:	1
Group Weight:	240kg
No.1 Axle	
Group Weight:	240kg

WEIGHING REPORT	
Serial No:	100013
Date:	10-10-2023
Time:	11:43:45
Truck:	123
Operator:	
Driver:	
Total weight:	280kg
No.1 Axle Config:	5
Group Weight:	280kg
No.1 Axle	
Group Weight:	140kg
No.2 Axle	
Group Weight:	140kg

Printout sample